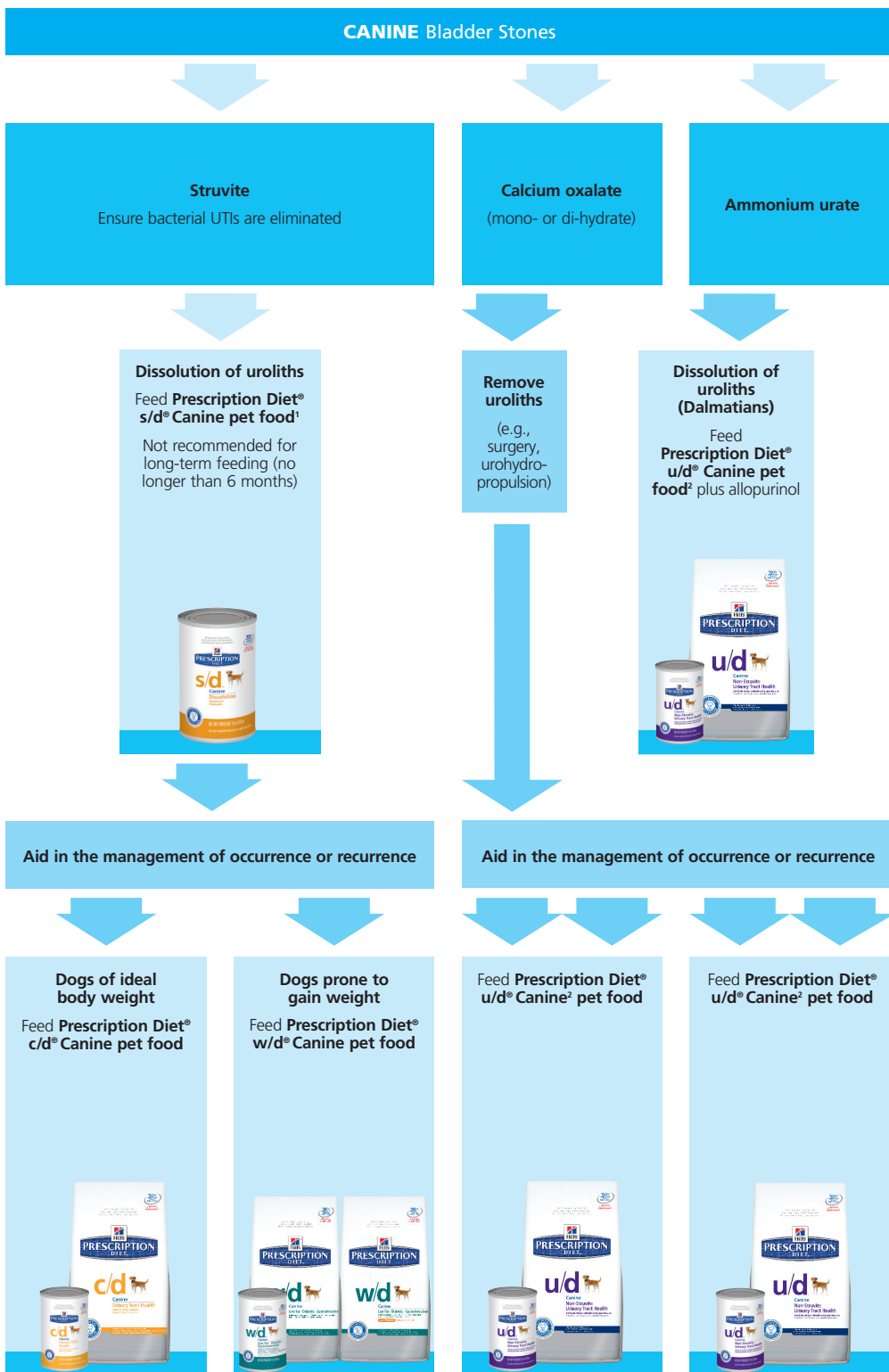


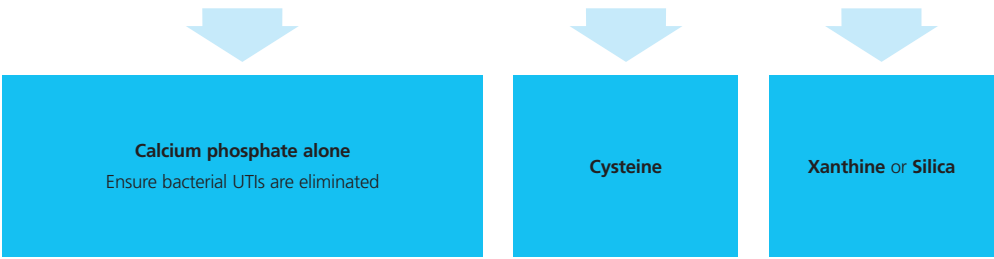
Managing Canine Patients with Urolithiasis



¹ See the section on Prescription Diet® s/d® Canine pet food for list of contraindications.

² See the section on Prescription Diet® u/d® Canine pet food for list of patients in which u/d is not recommended.

CANINE Bladder Stones



Remove uroliths
(e.g., surgery, urohydropropulsion)

Dissolution of uroliths
Feed **Prescription Diet® u/d® Canine pet food²** plus tiopronin

Remove uroliths
(e.g., surgery, urohydropropulsion)

Aid in the management of occurrence or recurrence

Aid in the management of occurrence or recurrence

Dogs of ideal body weight
Feed **Prescription Diet® c/d® Canine pet food**

Dogs prone to gain weight
Feed **Prescription Diet® w/d® Canine pet food**

Feed **Prescription Diet® u/d® Canine² pet food**

Feed **Prescription Diet® u/d® Canine² pet food** (preferably canned)

